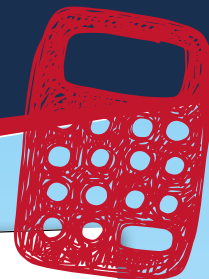


# BES Maths Challenge 2 - Decode the Joke

## Order of Operations



Calculate a value for each of the letters of the alphabet.

A	$4 + 2 \times 8$	
B	$5 \times 3 + 1$	
C	$8 + 10 \div 2$	
D	$4 \times 3^2 - 5$	
E	$10 - 2^2$	
F	$50 - 6 \times 3$	
G	$7 + 2 \times 4^2$	
H	$10^2 - 5 \times 3$	
I	$(5 + 3) \div (-9 + 1)$	
J	$20 - (2 - 5)^2$	
K	$8^2 + 16 \div 2$	
L	$(19 + 1) \div 2^2$	
M	$-3 \times 2^3$	

N	$8 + 3^3$	
O	$10^2 - 2 \times 7$	
P	$7 + 50 \div 5$	
Q	$60 - (7 - 3)^2$	
R	$7 - \sqrt{16}$	
S	$6 \times \sqrt{9 + 16}$	
T	$\sqrt[3]{125} - 4 \times 5$	
U	$\sqrt[3]{65 - 1} \times (3 - 7)$	
V	$\sqrt{36} - 2 \times 3^2$	
W	$32 - 20 \div 4$	
X	$(20 - \sqrt[3]{125})^2$	
Y	$(8 - 5)^3 - 15 \div 3$	
Z	$80 - \sqrt{144} \div 6$	

Now decode the joke....

20	3	6		-12	20	-24	17	-1	3	6	30		39	86

86	31		20	-15		-24	20	-15	85	30	?		35	86

-15		-16	35	5	6	30	30		22	86	-16		13	86

-16	35	-15		31	3	20	13	-16	5	20	!			

